

# TORUS 2500 VERTICAL

## Category II or Category IV Appliance

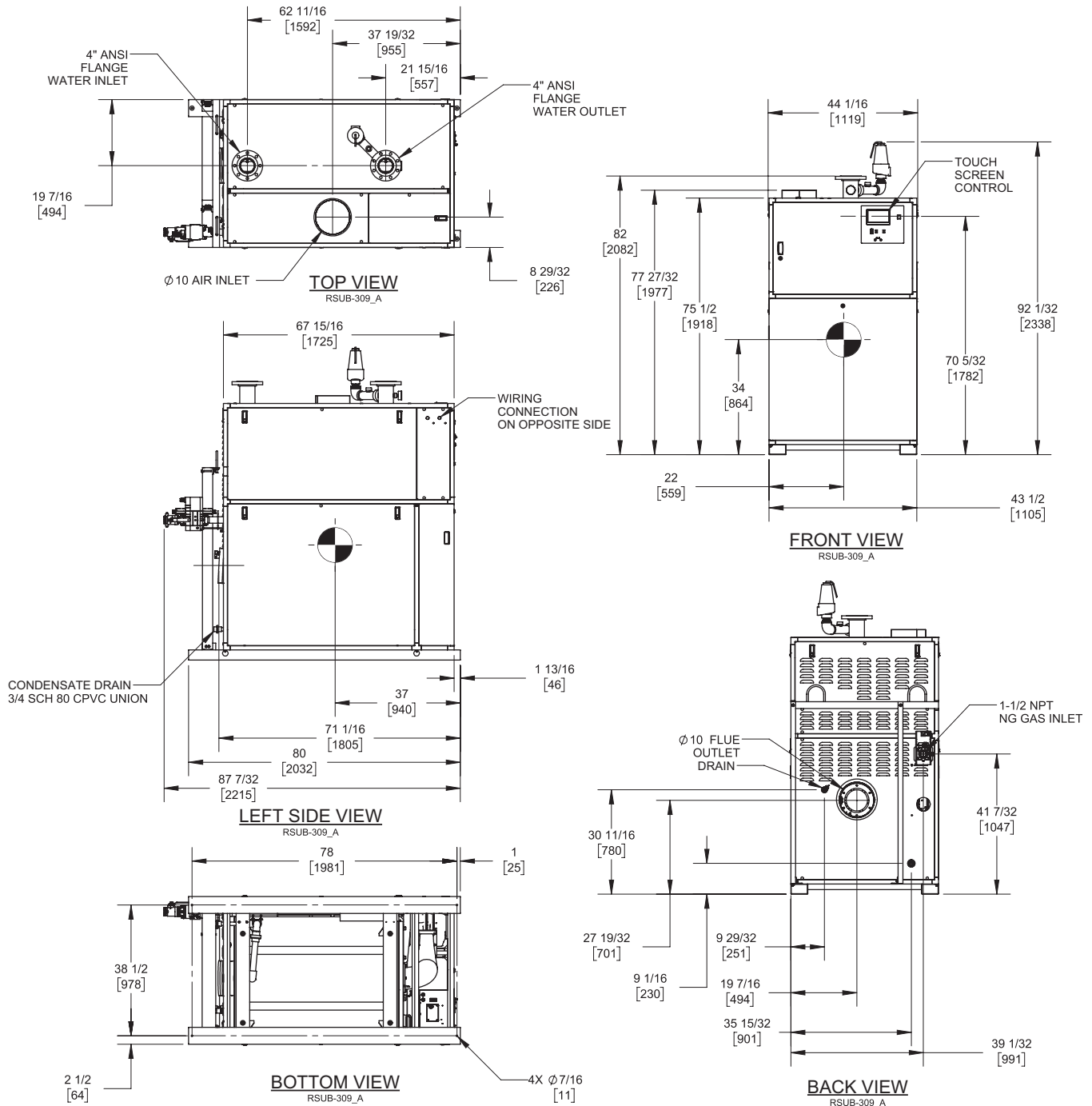
(see Installation and Operation Manual for venting information)

## CODE OPTIONS

CSD-1

FIRMWARE W/REMOTE TEST  
MANUAL RESET LWCO

## INDOOR UNIT



### Notes:

1. Dimensions are approximate and should not be used to "rough-in" equipment.
2. Dimensions are subject to change without notice.
3. All dimensions are in inches (mm).
4. Symbol indicates center of gravity.

# TORUS 2500 VERTICAL

## Category II or Category IV Appliance

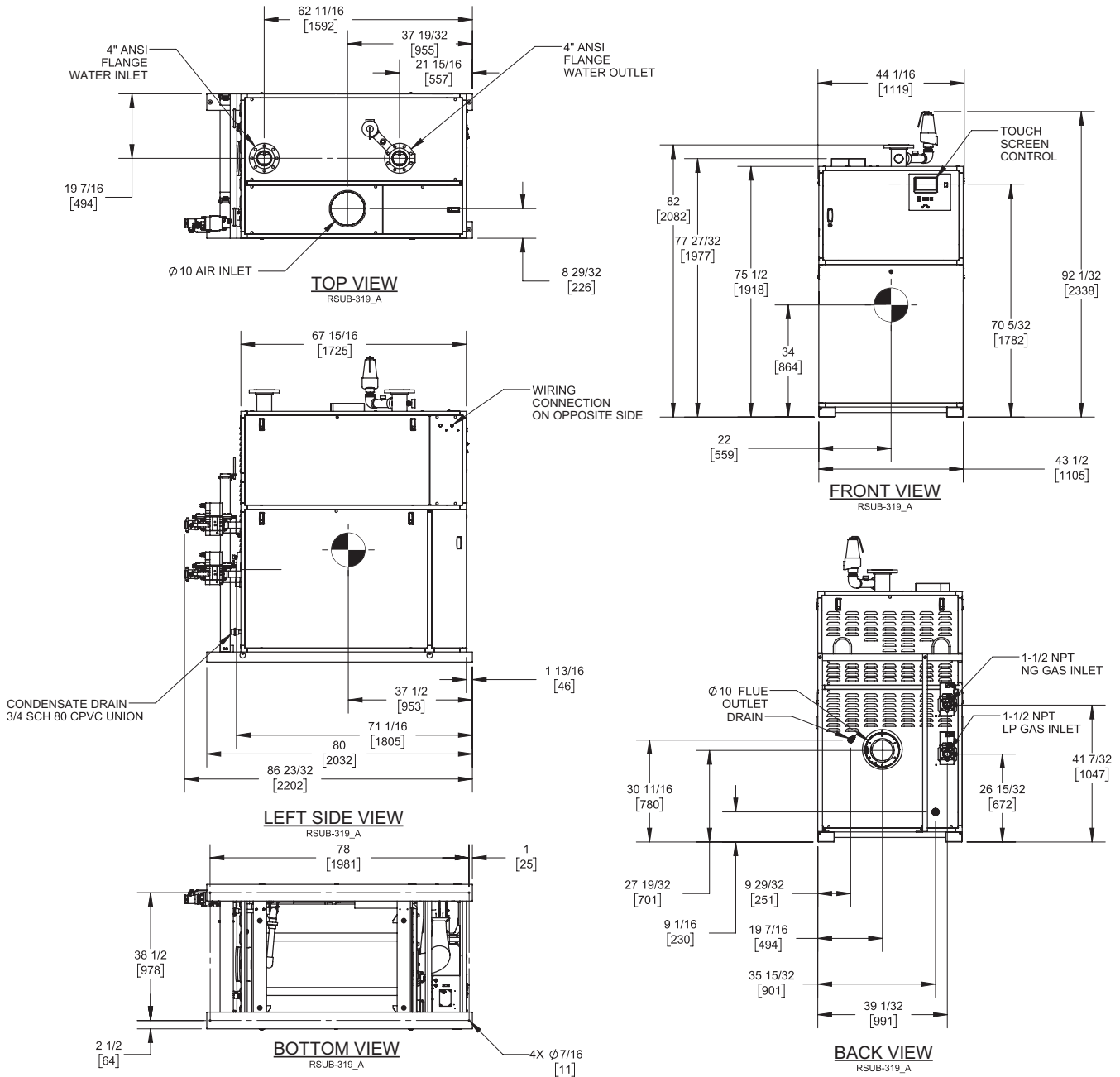
(see Installation and Operation Manual for venting information)

## CODE OPTIONS

CSD-1

FIRMWARE W/REMOTE TEST  
MANUAL RESET LWCO

## DUAL FUEL UNIT



### Notes:

1. Dimensions are approximate and should not be used to "rough-in" equipment.
2. Dimensions are subject to change without notice.
3. All dimensions are in inches (mm).
4. Symbol indicates center of gravity.

## BOILER CERTIFIED RATINGS & CAPACITIES

<b>Fuel Type</b>	Natural/Propane Gas	<b>Boiler FLA</b>	15.05*
<b>Input BTU/hr.</b>	2,500,000 / 733 kW	<b>Boiler HP</b>	72.45
<b>Output BTU/hr.</b>	2,435,000 / 713 kW	<b>Min. Gas Pressure Required</b>	4"W.C.
<b>Electrical Requirements</b>	230 VAC/60 Hz/3PH	<b>Max. Gas Pressure Allowed</b>	14" W.C.
		<b>Operating Weight</b>	2311 lbs / 1048 kg

## BOILER TRIM & CONTROLS

<b>Main Gas Valve</b>	Dungs MBC	<b>Air Switch</b>	Huba
<b>Firing Valve</b>	1 1/2" Apollo	<b>Flow Switch</b>	SIKA
<b>Ignition Control</b>	Fenwal	<b>Blocked Flue Switch</b>	Cleveland NS2
<b>Operating Control</b>	HeatNet®	<b>Blower Motor</b>	Ametek
<b>High Limit</b>	Jumo	<b>L.W.C.O.</b>	800
<b>Main Ball Valve</b>	1 1/2" Apollo	<b>Relief Valve (WB)</b>	1" x 1 1/2" set @ 50 psi
Pump contactor strongly recommended for water heater applications.		<b>Relief Valve (WW)</b>	1 1/2" x 1 1/2" set @ 125 psi

## A.S.M.E.

<b>ASME Sect IV Fire Side</b>	300.69 Sq. Ft. / 27.94 Sq. M.	<b>Design Data</b>	Max. 160 psig & 210°F
<b>Htg Surface</b>		<b>Water Volume</b>	24.9 gal. / 94.3 Liters
<b>ASME Sect IV Water Side</b>	277.23 Sq. Ft. / 25.76 Sq. M.	<b>pH Level</b>	6.5-8.5
<b>Htg Surface</b>			

\* Add circulator amps.

## BOILER TEMPERATURE RISE / PRESSURE DROP (Based on Full Input)

20°F / 11.1°C				30°F / 16.7°C				40°F / 22.2°C				50°F / 27.8°C				60°F / 33.3°C			
Flow Rate		Pressure Drop		Flow Rate		Pressure Drop		Flow Rate		Pressure Drop		Flow Rate		Pressure Drop		Flow Rate		Pressure Drop	
GPM	L/s	Ft	kPa	GPM	L/s	Ft	kPa	GPM	L/s	Ft	kPa	GPM	L/s	Ft	kPa	GPM	L/s	Ft	kPa
243.8	15.4	17.2	51.5	162.6	10.3	9.2	27.4	121.9	7.7	6.2	18.4	97.5	6.2	4.5	13.5	81.3	5.1	3.5	10.4

Flow GPM (Boiler)				Temp. Rise (°F) (Boiler**)				Vent Length (Equiv. Ft.)				Air Inlet Length (Equiv. Ft.)			
Min		Max		Min		Max		Min		Max		Min		Max	
81.3		243.8		20		60		10		160		0		160	

\*\* Min/Max delta t reflects boiler operation at full input. For applications requiring operation above/below these parameters please consult factory.

## WATER HEATER HOURLY RECOVERY CAPACITY (GPH & LPH)

40°F	22°C	60°F	33°C	80°F	44°C	100°F	56°C	120°F	67°C	140°F	78°C
7278	27511	4852	18340	3639	13755	2911	11004	2426	9170	2079	7860

Water Heater Min Flow Rates							
Normal (4 to 12) gpg				Hard (12 to 15) gpg			
Flow Rate		Pressure Drop		Flow Rate		Pressure Drop	
gpm	L/s	Ft	kPa	gpm	L/s	Ft	kPa
239.4	15.1	16.6	49.6	319.2	20.1	29.6	88.5

<b>REP FIRM</b>	_____	<b>TORUS 2500 VERTICAL</b>
<b>SUBMITTED BY</b>	_____	
<b>JOB NAME</b>	_____	
<b>ARCHITECT</b>	_____	
<b>ENGINEER</b>	_____	
<b>CONTRACTOR</b>	_____	
<b>DATE</b>	_____	<b>Category II or Category IV Appliance</b> (see Installation and Operation Manual for venting information)
		<b>RBI®</b> A Division of Mestek, Inc. Westfield, MA 01085 (413) 564-5515 <b>RELIABLE. BOLD. INNOVATIVE.</b>